

Magnetical structure, good axial load resistance, save space.

Specification

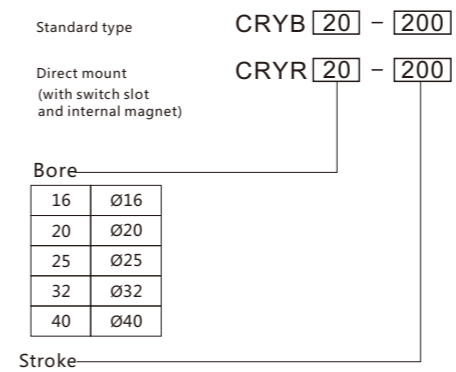
Bore(mm)	16	20	25	32	40
Fluid	Compressed air (Non-lube)				
Max. pressure(MPa)	0.7				
Min. pressure(MPa)	0.16	0.15	0.14	0.12	
Ambient and fluid temperature	-10~+70°C(No freeing)				
Piston speed mm/s	CRYB:50~400;CRYR:50~500				
Cushion	Both ends rubber bumper				
Magnet holding force N	137	210	363	560	920
Port size	M5x0.8	Rc1/8			Rc1/4

Stroke/Auto switch type

Bore(mm)	Standard stroke	Max. stroke		Switch model
		Without switch	Switch	
16	50 100 150 200 250 300 350 400 450 500	1000	750	
20	100 150 200 250 300 350 400 450 500 600 700 800	1500	1000	
25		3000	1200	
32			1500	
40	100 150 200 250 300 350 400 450 500 600 700 800 900 1000			

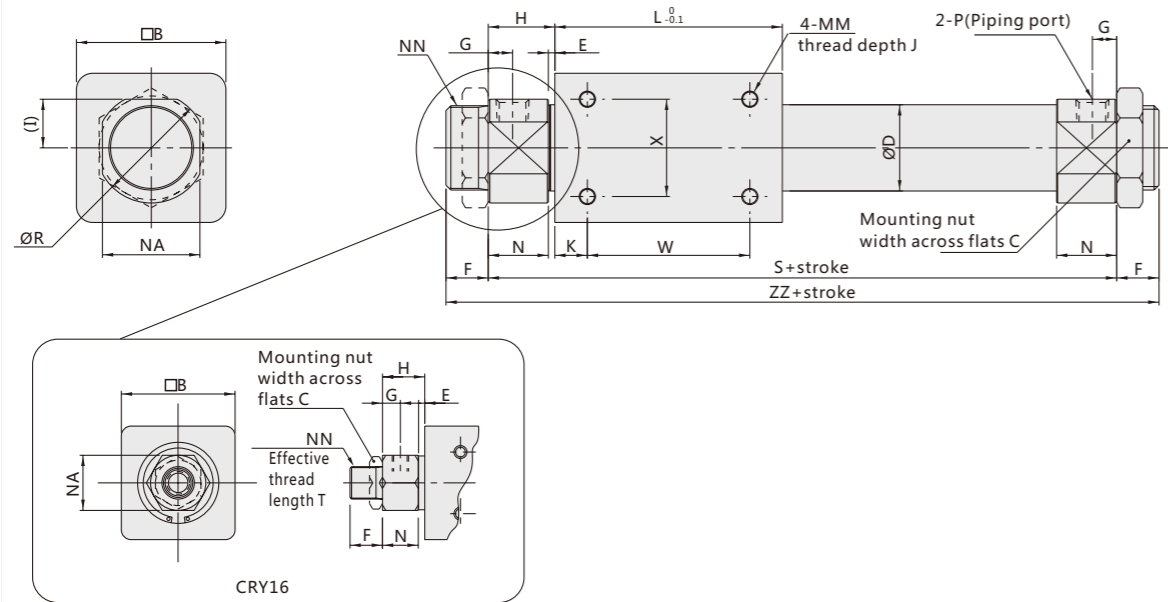
* No Switch for CRYB.

Ordering code



■ Dimensions (mm)

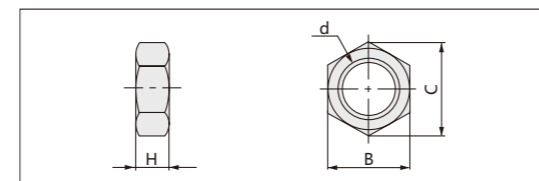
CRYBΦ16~Φ40 (standard)



Series	A	B	C	D	E	F	G	H	I	J	K	L	MM	N	NA	NN	P
CRYB16	4	35	14	16.6	3	10	5.5	13	-	6	11	57	M4 x 0.7	11	17	M10 x 1	M5X0.8
CRYB20	8	36	26	21.6	2	13	7.5	20	28	6	8	66	M4 x 0.7	18	24	M20 x 1.5	Rc1/8
CRYB25	8	46	32	26.4	2	13	7.5	20.5	34	8	10	70	M5 x 0.8	18.5	30	M26 x 1.5	Rc1/8
CRYB32	8	60	32	33.6	2	16	8	22	40	8	15	80	M6 x 1	20	36	M26 x 1.5	Rc1/8
CRYB40	10	70	41	41.6	3	16	11	29	50	10	16	92	M6 x 2	26	46	M32 x 2	Rc1/4

Series	R	S	T	W	X	ZZ
CRYB16	-	83	8	35	19	103
CRYB20	12	106	10	50	25	132
CRYB25	15	111	10	50	30	137
CRYB32	18	124	13	50	40	156
CRYB40	23	150	13	60	40	182

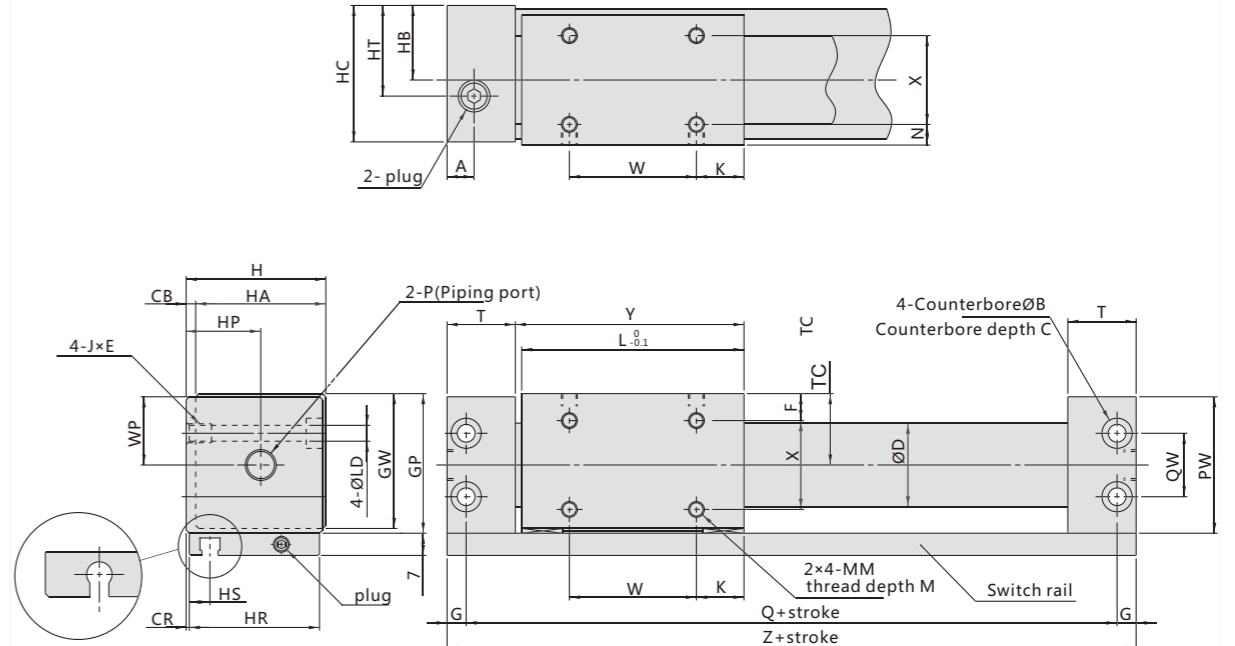
mount screw



Code	Bore(mm)	d	H	B	C
SNJ-016B	16	M10 x 1.0	4	14	16.2
SNJ-020B	20	M20 x 1.5	8	26	30
SNJ-032B	25.32	M26 x 1.5	8	32	37
SNJ-040B	40	M32 x 2.0	10	41	47.3

■ Dimensions (mm)

CRYRΦ16~Φ40(direct mount)



CRYR16~20 CRYR25~40

Series	A	B	C	CB	CR	D	F	G	GP	GW	H	HA	HB	HC	HP	HR	HS	HT	J x E	K
CRYR16	10.5	8	4.2	2	0.5	16.6	8	5	33	31.5	32	30	17	31	17	30	8.5	17	M5 x 0.8 x 7	14
CRYR20	9	9.5	5.2	3	1	21.6	9	6	39	37.5	39	36	21	38	24	36	7.5	24	M6 x 1 x 8	11
CRYR25	8.5	9.5	5.2	3	1	26.4	8.5	6	44	42.5	44	41	23.5	43	23.5	41	6.5	23.5	M6 x 1 x 8	15
CRYR32	10.5	11	6.5	3	1.5	33.6	10.5	7	55	53.5	55	52	29	54	29	51	7	29	M8 x 1.25 x 10	13
CRYR40	10	11	6.5	5	2	41.6	13	7	65	63.5	67	62	36	66	36	62	8	36	M8 x 1.25 x 10	15

Series	L	LD	M	MM	N	PW	Q	QW	T	TC	W	WP	X	Y	Z
CRYR16	53	4.3	5	M4 x 0.7	6	32	84	18	19	17	25	16	18	54.5	94
CRYR20	62	5.6	5	M4 x 0.7	7	38	95	17	20.5	20	40	19	22	64	107
CRYR25	70	5.6	6	M5 x 0.8	6.5	43	105	20	21.5	22.5	40	21.5	28	72	117
CRYR32	76	7	7	M6 x 1	8.5	54	116	26	24	28	50	27	35	79	130
CRYR40	90	7	8	M6 x 1	11	64	134	34	26	33	60	32	40	93	148

Series	WS	P
CRYR16	7	M5X0.8
CRYR20	7	Rc1/8
CRYR25	7	Rc1/8
CRYR32	7	Rc1/8
CRYR40	7	Rc1/4



Magnetical structure, no mechanical connection between the piston and slider, good sealing performance. Dual guide rod structure with high precision, can absorb a certain amount of lateral or eccentric load.

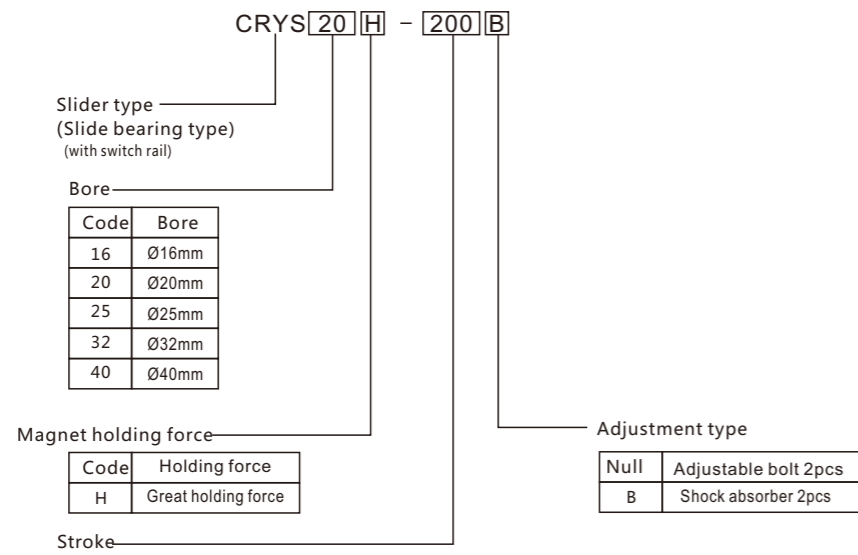
Specification

Bore(mm)	16	20	25	32	40
Fluid	Compressed air(Non-lube)				
Max. pressure (MPa)	0.7				
Min. pressure(MPa)	0.18				
Ambient and fluid temperature	-10~+60°C(No freezing)				
Piston speed mm/s	50~400				
Cushion	Both ends rubber bumper/Shock absorber(option)				
Magnet holding force N	140	200	320	550	850
Port size	M5x0.8	Rc1/8			Rc1/4

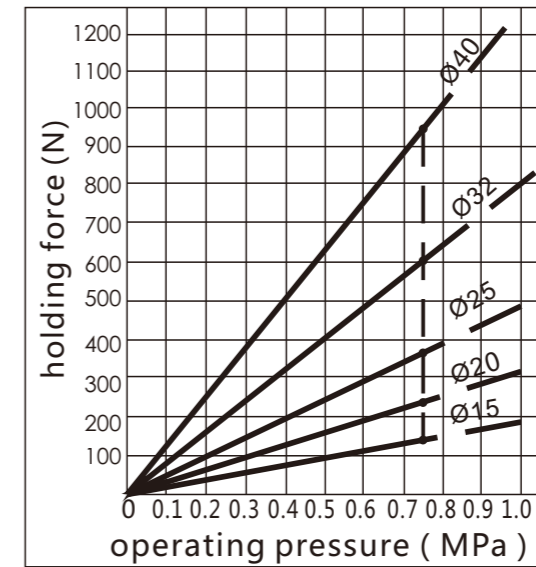
Stroke/Auto switch type

Bore(mm)	Stanadard	Max. stroke	Rail mount
			Switch model
16	50 100 150 200 250 300 350 400 450 500	750	
20	100 150 200 250 300 350 400 450 500 600 700 800	1000	
25			
32			
40	100 150 200 250 300 350 400 450 500 600 700 800 900 1000	1500	

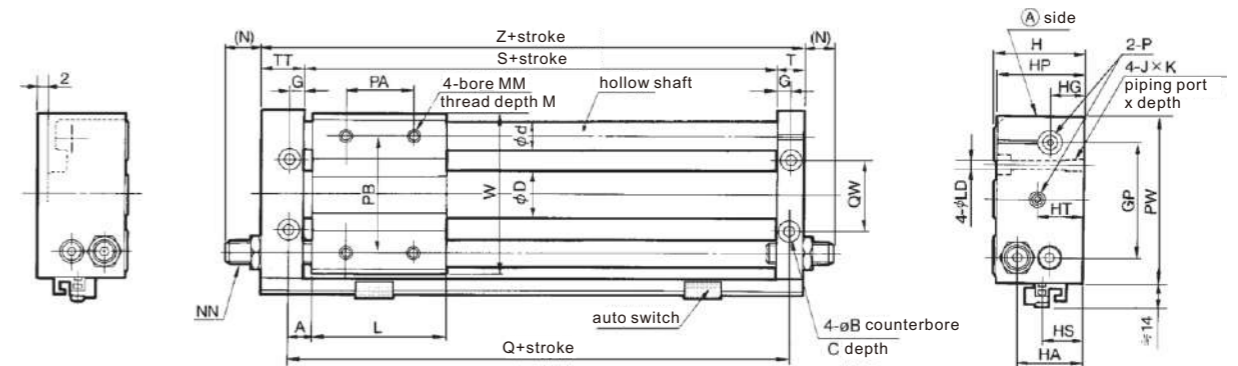
Ordering code



Magnet holding force



Dimensions (mm)



Series	Stroke range	D	d	A	B	C	HT	G	GP	H	HA	HG	HP	HS	T	JXK	L	LD	M
CRYS16	~750	16.6	12	7.5	9.5	5	21	6.5	52	40	29	13	39	15	12.5	M6X1.0X9.5	60	5.6	8
CRYS20	~1500	21.6	16	10	9.5	5.2	20	8.5	62	46	36	17	45	25.5	16.5	M6X1.0X9.5	70	5.6	10
CRYS25	~1500	26.4	16	10	11	6.5	20	8.5	70	54	40	20	53	23	16.5	M8X1.25X10	70	7	10
CRYS32	~1500	33.6	20	12.5	14	8	24	9.5	86	66	46	24	64	27	18.5	M10X1.5X15	85	8.7	12
CRYS40	~1500	41.6	25	12.5	14	8	25	10.5	104	76	57	25	74	30	20.5	M10X1.5X15	95	8.7	12

Series	MM	NN	(N)	P	PA	PB	PW	QW	Q	S	TT	Z	W
CRYS16	M5X0.8	M8X1.0	7.5	M5X0.8	30	50	75	30	75	62	22.5	97	72
CRYS20	M6X1.0	M10X1.0	9.5	Rc1/8	40	70	90	38	90	73	25.5	115	87
CRYS25	M6X1.0	M14X1.5	11	Rc1/8	40	70	100	42	90	73	25.5	115	97
CRYS32	M8X1.25	M20X1.5	11.5	Rc1/8	40	75	122	50	110	91	28.5	138	119
CRYS40	M8X1.25	M20X1.5	10.5	Rc1/8	65	105	145	64	120	99	35.5	155	142



Magnetical structure, no mechanical connection between the piston and slider, good sealing performance. Dual guide rod structure with high precision, can absorb a certain amount of lateral or eccentric load.

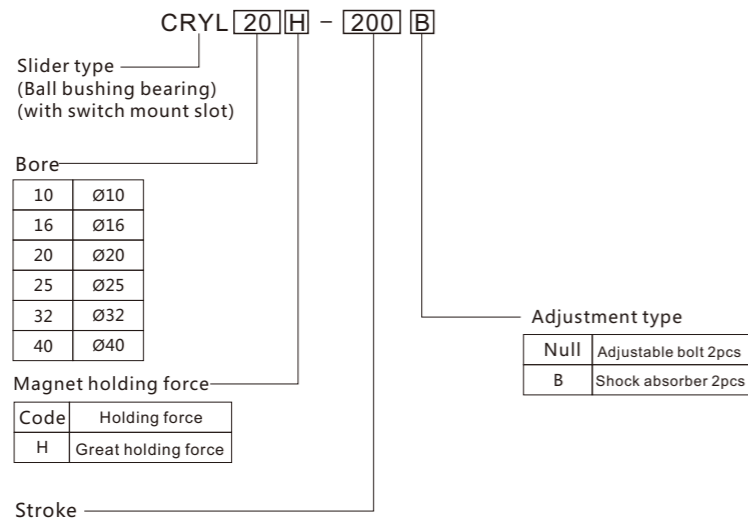
■ Specification

Bore(mm)	10	16	20	25	32	40
Fluid	Compressed air (Non-lube)					
Max. pressure (MPa)	0.7					
Min. pressure (MPa)	0.18					
Ambient and fluid temperature	-10~+60°C(No freezing)					
Piston speed mm/s	50~400					
Cushion	Both ends rubber bumper/Shock absorber(optional)					
Magnet holding force N	60	140	200	320	550	850
Port size	M5x0.8		Rc1/8			Rc1/4

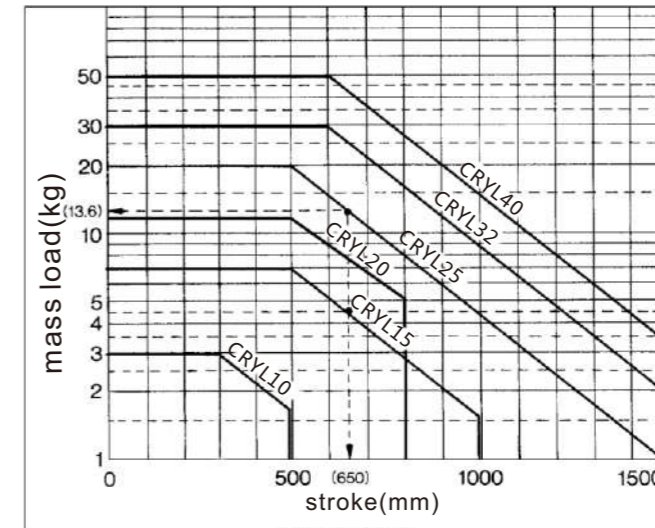
■ Stroke/Auto switch type

Bore(mm)	Standard stroke	Max. stroke	Rail mount Switch model
10	50 100 150 200 250 300	500	
16	50 100 150 200 250 300 350 400 450 500	750	
20	100 150 200 250 300 350 400 450 500 600 700 800	1000	
25		1500	
32			
40	100 150 200 250 300 350 400 450 500 600 700 800 900 1000		

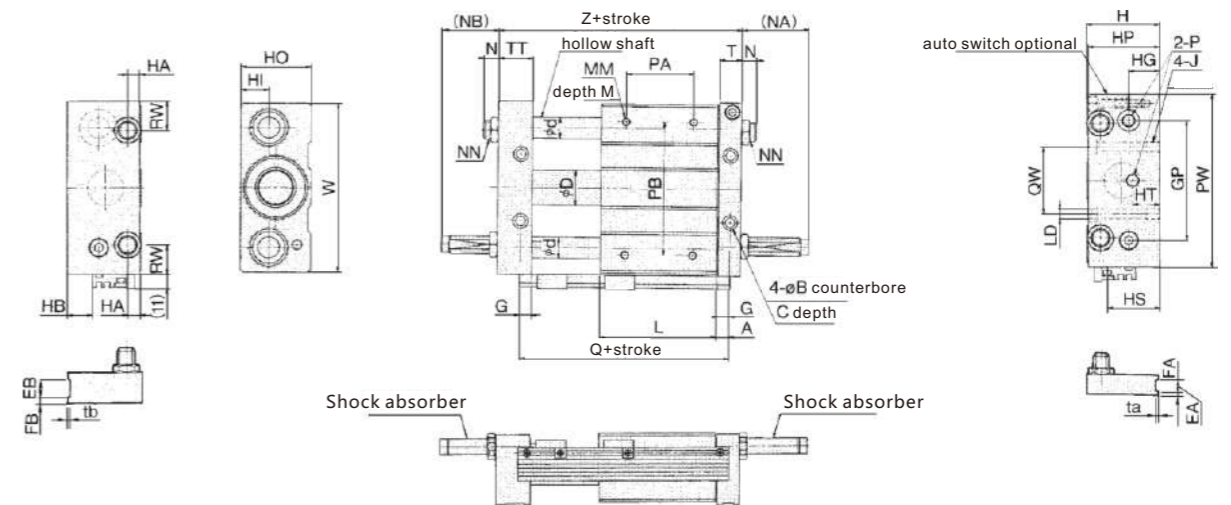
■ Ordering code



■ Max. load mass and stroke



■ Dimensions (mm)



Series	Stroke range	A	B	C	D	d	EA	EB	FA	FB	G	GP	H	HA	HB	HG	HI	HO	HP	HS	HT	J	JK	L	LD
CRYL10	~500	8.5	8	4	12	10	6	12	3	5	7.5	50	34	6	17.5	14.5	13.5	33	33	21.5	18	M5X0.8	9.5	68	4.3
CRYL16	~750	7.5	9.5	5	16.6	12	6	13	3	6	6.5	65	40	6.5	4	16	14	38	39	25	16	M6X1.0	9.5	75	5.6
CRYL20	~1500	9.5	9.5	5.2	21.6	16	-	-	-	-	8.5	80	46	9	10	18	16	44	45	31	20	M6X1.0	10	86	5.6
CRYL25	~1500	9.5	11	6.5	26.4	16	8	14	4	7	8.5	90	54	9	18	23	21	52	53	39	20	M8X1.25	10	86	7
CRYL32	~1500	10.5	14	8	33.6	20	8	16	5	7	9.5	110	66	12	26.5	26.5	24.5	64	64	47.5	25	M10X1.5	15	100	9.2
CRYL40	~1500	11.5	14	8	41.6	25	10	20	5	10	10.5	130	78	12	35	30.5	28.5	76	74	56	30	M10X1.5	15	136	9.2

Series	M	MM	(N)	(NA)	(NB)	NN	P	PA	PB	PW	Q	QW	RW	T	ta	tb	TT	W	Z	Shock absorber
CRYL10	8	M4X0.7	9.5	27	19	M8X1.0	M5X0.8	30	60	80	85	26	17.5	12.5	0.5	1.0	20.5	77	103	AC-0806
CRYL16	8	M5X0.8	7.5	27	17	M8X1.8	M5X0.8	45	70	95	90	30	15	12.5	0.5	1.0	22.5	92	112	AC-0806
CRYL20	10	M6X1.0	10	29	20	M10X1.0	Rc1/8	50	90	120	105	40	28	16.5	-	-	25.5	117	130	AC-1008
CRYL25	10	M6X1.0	11	49	40	M14X1.5	Rc1/8	60	100	130	105	50	22	16.5	0.5	1.0	25.5	127	130	AC-1412
CRYL32	12	M8X1.25	11.5	52	42	M20X1.5	Rc1/8	70	120	160	121	60	33	18.5	0.5	1.0	28.5	157	149	AC-2020
CRYL40	12	M8X1.25	10.5	51	36	M20X1.5	Rc1/4	90	140	190	159	84	35	20.5	1.0	1.0	35.5	187	194	AC-2020